

AC/DC Converter Wiring Instructions

The following instructions explain how to wire the AC/DC converter between the vehicle's/vessel's AC power supply and the TracVision® L3, S3, C3, L2, S2, LF, or SF. *The AC/DC converter compensates for the voltage drop that occurs when using an extended-length data/power cable.*

Materials Provided

The following components are provided with the AC/DC converter kit.

Part	Part #
AC/DC converter	19-0297
Data/power cable, 45 ft. OR	32-0730-45
Data/power cable, 60 ft.	32-0730-60
Velcro loop tape, adhesive back	19-0146
Velcro hook tape, adhesive back	19-0348



Figure 1

AC/DC Converter and Connecting Cables

Wiring the AC/DC Converter

1. Ensure that vehicle/vessel power is turned off.
2. Disconnect the vehicle's/vessel's AC power supply and test the circuit to ensure that no power is present.



Before connecting the AC/DC converter, be sure the vehicle/vessel power is turned off and the vehicle's/vessel's AC power is disconnected.

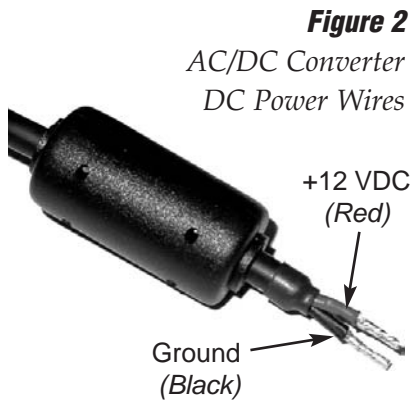


Figure 3
Connecting the DC Power Wires
(TracVision L3, S3, C3)

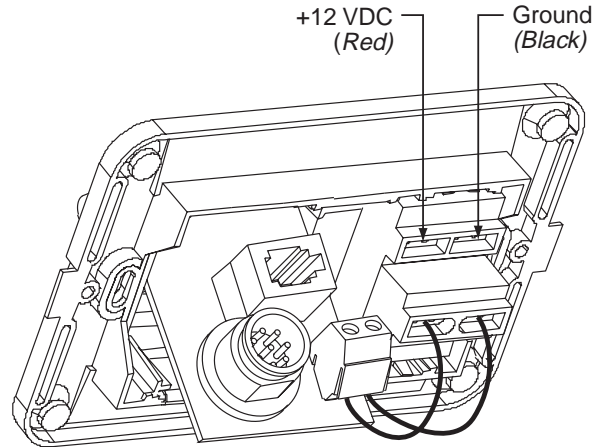
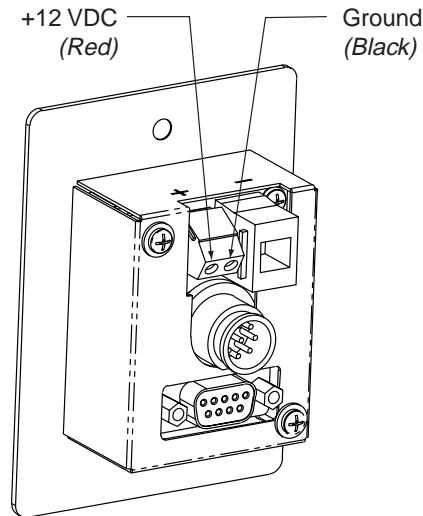


Figure 4
Connecting the DC Power Wires
(TracVision L2, S2, LF, SF)



3. Connect the AC/DC converter's DC power wires to the TracVision switchplate. Refer to the illustration below for your particular TracVision system. *If vehicle/vessel power wires are already connected to the switchplate, be sure to disconnect them; they are no longer needed.*

4. Plug the AC/DC converter's AC power cord into the vehicle's/vessel's AC power supply.
5. Securely mount the AC/DC converter to a solid structure using the supplied Velcro tape.
6. Reconnect the vehicle's/vessel's AC power supply.

Be sure to follow the appropriate instructions in the TracVision Owner's Manual to complete the TracVision installation.